

调压器 /Regulator

型号注释 /Note for type:

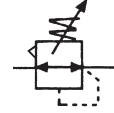


系列代码:
Series Code:

R、UR 系列调压器
R、UR Series Regulator

接管口径:
Joint Pipe Bore:

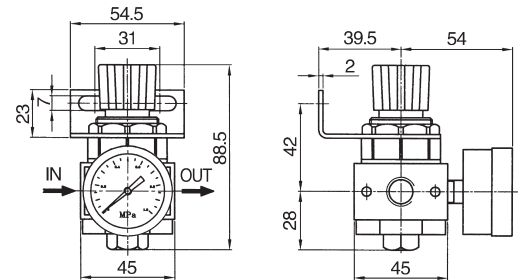
02:G1/4"
03:G3/8"
04:G1/2"
06:G3/4"
08:G1"



技术参数 /Specification:

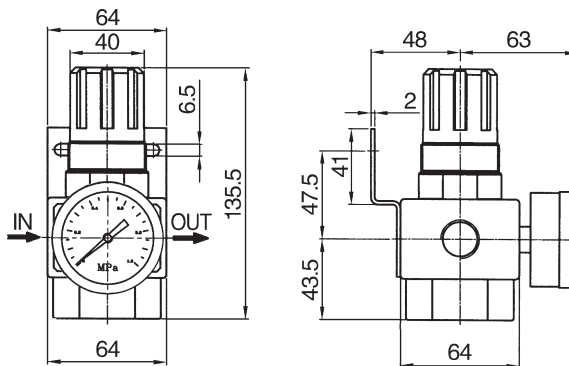
型号 /Type	R-02	UR-02	UR-03	UR-04	UR-06	UR-08
接管口径 /Port size (G)	1/4"	1/4"	3/8"	1/2"	3/4"	1"
压力表接管口径 /Gauge thread (G)	1/8"	1/4"				
工作介质 /Fluid	压缩空气 /Compressed Air					
使用压力范围 Operating pressure range (MPa)	0.15~0.85					
最大处理流量 /Max.Flow rate(L/min)	1546	2050	2500	7900	8100	
使用温度范围 /Ambient temperature(°C)	-10~60					
构造 /减压阀 /Structure	活塞型 /Piston type					

R-02



外形尺寸 /Dimension(mm):

UR-02,03,04



UR-06,08

