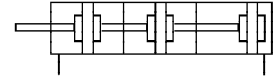
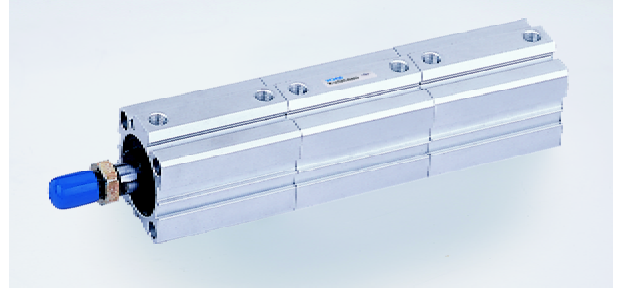


倍压薄型气缸 /Multi-pressure Thin Cylinder

特点 /characteristic:

- 通过 2 个、3 个或 4 个相同缸径和行程的气缸相互连接，使推力比一个普通气缸增 2 倍、3 倍或 4 倍。
- 倍力气缸只需 2 个气接口。
- 注意：拉力相当于同缸径的单个气缸的拉力。
- By connecting 2,3 or 4 cylinders which have the same bore and stroke, make the push force as 2,3 or 4 times than one cylinder.
- Only need two air ports.
- Attention: Draw-in force is the same as one cylinder.



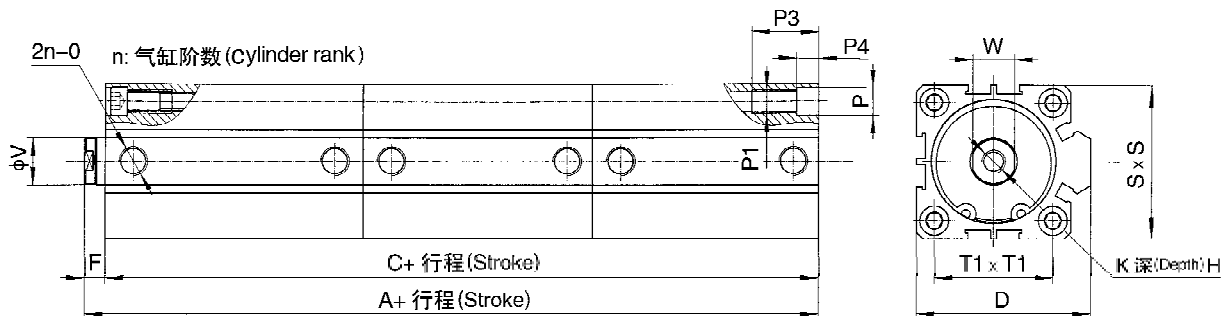
型号注释 /Note for type:

SDAT	40	×	50	+	3	-	B	-	S
系列代码: Series Code:	缸径 /Bore: φ 25 φ 80 φ 40 φ 100 φ 63		行程: Stroke:		气缸数量: Cylinder qty:		牙型: Thread type: Blank(空白):内牙/inner B:外牙 outer thread N:无牙 without thread		磁石代号: With magnet: S:附磁石 with magnet Blank(空白):不附磁 without magnet
SDAT 倍压薄型气缸 SDAT Multi-pressure thin cylinder									

技术参数 /Specification:

气缸内径 /Cylinder bore	25	40	63	80	100
工作介质 /Fluid	压缩空气 /Compressed Air				
结构特点 /Structure character	活塞式气缸 /Piston type cylinder				
使用压力范围 /Operating pressure range(Mpa)	0.1~1				
使用温度范围 /ambient temperature(°C)	-10~70				

外形尺寸 /Dimension:



符号 /Symbol	不附磁 /Without magnet		附磁 /With magnet		D	E		F	K1	O	P	P1	P3	P4	S	T1	V	W
	A	C	A	C		≤ 10	> 10											
25	22n+5	22n-1	22n+15	22n+9	42	10	6	M5 x 0.8	M5 x 0.8	8.2	M6 x 1	15	5.5	40	28	10	8	
40	27n+6	27n-1	27n+16	27n+9	59	12	7	M8 x 1.25	G1/8"	10	M8 x 1.25	20	7.5	52	40	16	14	
63	33n+8	33n-1	33n+18	33n+9	84.5	15	9	M10 x 1.5	G1/4"	11	M8 x 1.25	25	8.5	75	60	20	17	
80	42n+10	42n-1	42n+20	42n+9	104	15	20	M14 x 1.5	G3/8"	14	M12 x 1.75	25	10.5	94	74	25	22	
100	52n+11	52n-1	52n+21	52n+9	124	18	20	M18 x 1.5	G3/8"	17.5	M14 x 2	30	13	114	90	32	27	