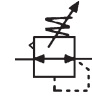


调压器 /Regulator

型号注释 /Note for type:

DR	200	01
↓	↓	↓
系列代码: Series Code: DR 系列调压器 DR Series Regulator	型式: Type: 100 200 400 600	接管口径: Joint Pipe Bore: M5, 01:G1/8" 02:G1/4" 03:G3/8" 04:G1/2" 06:G3/4" 08:G1"

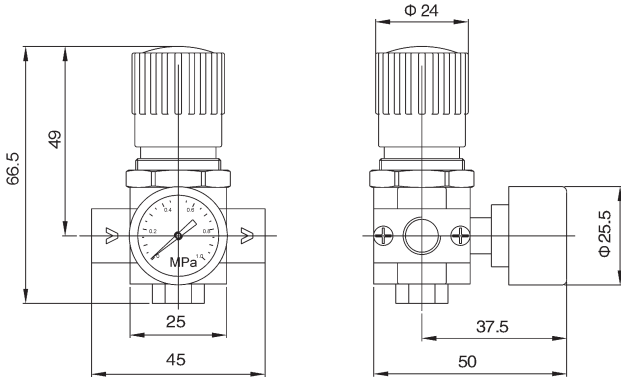


技术参数 /Specification:

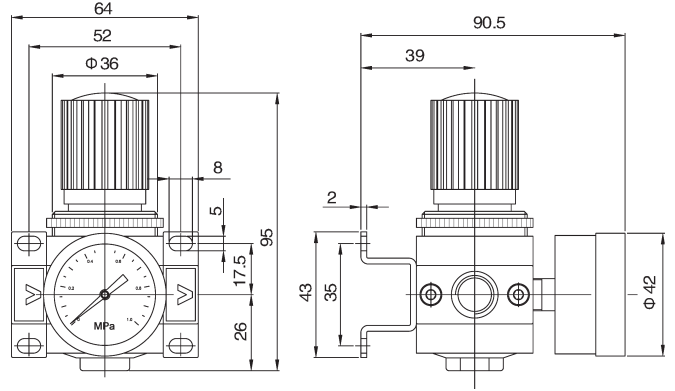
型号 /Type	DR100-M5、01	DR200-01、02、03	DR400-03、04、06	DR600-06、08
接管口径 /Port size (G)	M5 · 1/8"	1/8" · 1/4" · 3/8"	3/8" · 1/2" · 3/4"	3/4" · 1"
压力表接管口径 /Gauge thread (G)	M5	1/8"	1/4"	
工作介质 /Fluid	压缩空气 /Compressed Air			
使用压力范围 /Operating pressure range (MPa)	0.15~0.85	0.15~1.2		
最大处理流量 /Max.Flow rate(L/min)	500	1700	3500	11500
使用温度范围 /Ambient temperature(°C)	-10~60			

外形尺寸 / Dimension(mm):

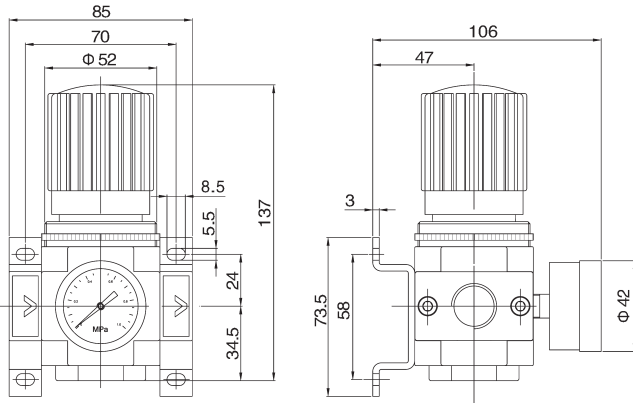
■ DR100-M5、01



■ DR200-01、02、03



■ DR400-03、04、06



■ DR600-06、08

