

电磁阀 /Solenoid Valve 气控阀 /Air control Valve

2

特点 /Characteristic:

- 正常使用 1000 万次以上寿命。
- 阀体经特殊镜面加工及硬质处理。
- 采用进口油封摩擦阻力小，增长油封寿命。
- 使用进口线圈、低耗电量、反应快速。
- Service life:10million cycle times.
- The bodies are mirror finished and hardening treated.
- Equipped with imported oil seals with smaller friction and longer service life.
- With imported coils,low power consumption,speedy response.
- Capable of long service time without being damaged.



型号注释 /Note for type:

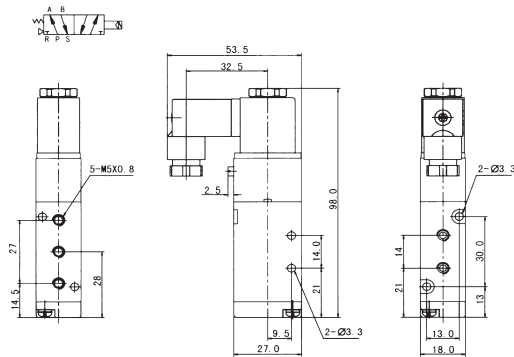
4V	1	10	06	AC220V	W
系列 /Series: 4V:二(三)位五口电磁阀 4V: 2(3)position 5 ports solenoid valve 4A:二(三)位五口气控阀 4A: 2(3)position 5 ports air control valve 3V:二位三口电磁阀 3V: 2 position 3 ports solenoid valve 3A:二位三口气控阀 3A: 2 position 3 ports air control valve 4M:二位五口板接式 4M: 2 position 5 ports board conneted 4M:三位五口板接式 4M: 3 position 5 ports board conneted	系列代号: Series code: 100 系列 100 Series	线圈及位数: Coil and position: 10:单电控双位置 Single coil 2 position 20:双电控双位置 Double coil 2 position 30C: 三位置中封式 3 positions enclosed type 30E: 三位置中泄式 3 positions exhausted type 30P: 三位置中压式 3 positions press type	接管口径: Port size: M5:M5x0.8 06:G1/8"	线圈电压: Coil voltage: DC12V DC24V AC24V 50/60Hz AC110V 50/60Hz AC220V 50/60Hz AC380V 50/60Hz	接线形式: Wiring type: Blank(空白): 茶色带灯端子式 /Browns B:白色带灯端子式 /White H:黑色端子式 /Black W:引线式 /Lead wire type

技术参数 /Specification:

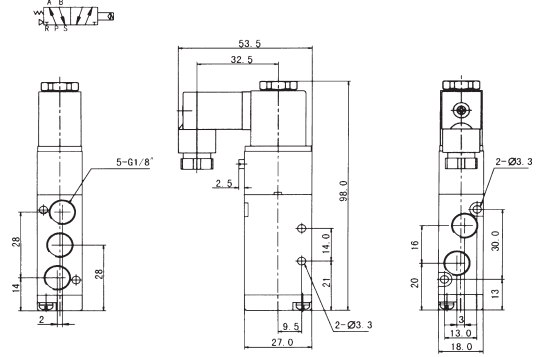
型 号/Type	4V110-M5	4V120-M5	4V130C-M5	4V130E-M5	4V130P-M5	4V110-06	4V120-06	4V130C-06	4V130E-06	4V130P-06
	4A110-M5	4A120-M5	4A130C-M5	4A130E-M5	4A130P-M5	4A110-06	4A120-06	4A130C-06	4A130E-06	4A130P-06
位置数/position number	二位五口/2 Positon 5 Way			三位五口/3 Positon 5 Way		二位五口/2 Positon 5 Way		三位五口/3 Positon 5 Way		
有效截面积/Effective sectional area	10mm ² (CV=0.56)			7mm ² (CV=0.40)		12mm ² (CV=0.67)		9mm ² (CV=0.50)		
型号/Type	3V110-M5	3V120-M5	3A110-M5	3A120-M5		3V110-06	3V120-06	3A110-06	3A120-06	
位置数/position number	二位三口/2 Positon 3 Way					二位三口/2 Positon 3 Way				
有效截面积/Effective sectional area	10mm ² (CV=0.56)					12mm ² (CV=0.67)				
接管口径 /Port size	进气/input= 出气/output= 排气/exhausted=M5 × 0.8					进气/input= 出气/output= 排气/exhausted=G1/8"				
工作介质 /Fluid	经 40 μ m 过滤的压缩空气 /Compressed Air									
动作方式 /Acting type	内部先导式 /Internally pilot-actuated									
使用压力范围 /Working pressure (MPa)	0.2-0.8									
使用温度范围 /Ambient temperature(°C)	-5~50									
使用电压范围 /Voltage range	± 10%									

外形尺寸 / Dimension(mm):

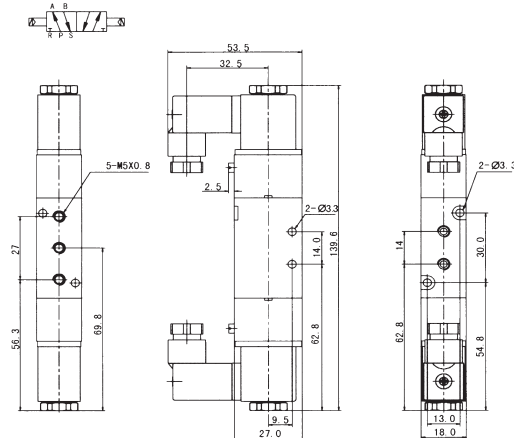
4V110-M5



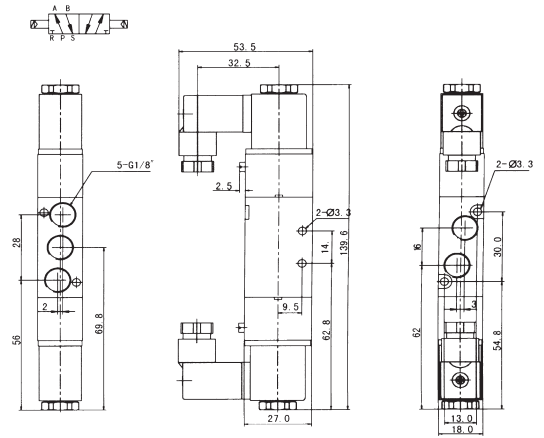
4V110-06



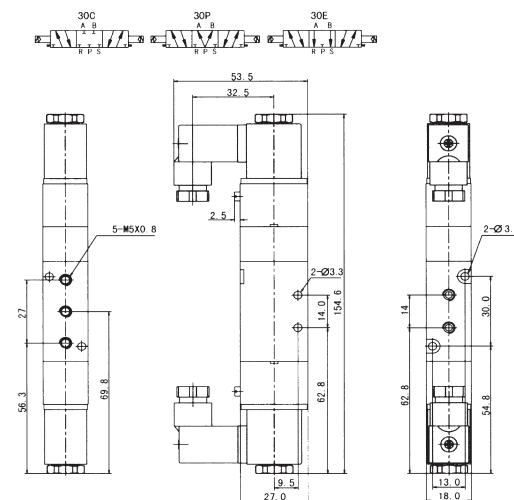
4V120-M5



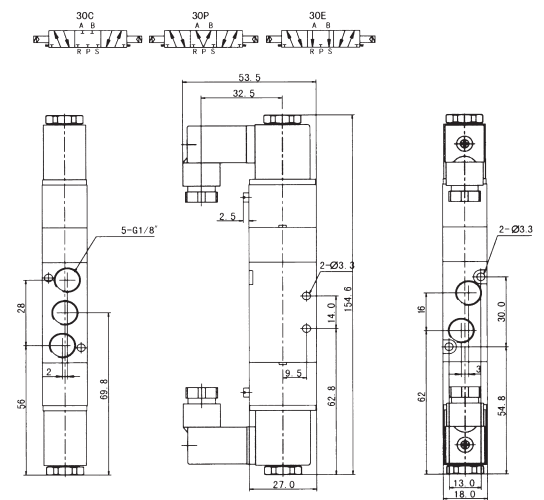
4V120-06



4V130-M5



4V130-06



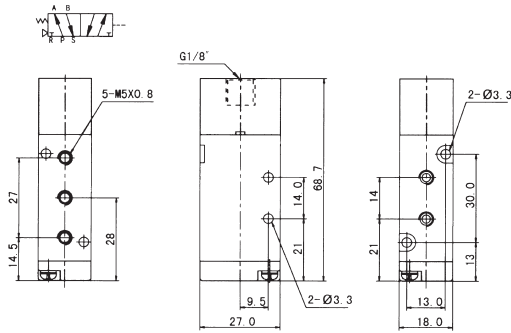
气动控制阀

外形尺寸 / Dimension(mm):

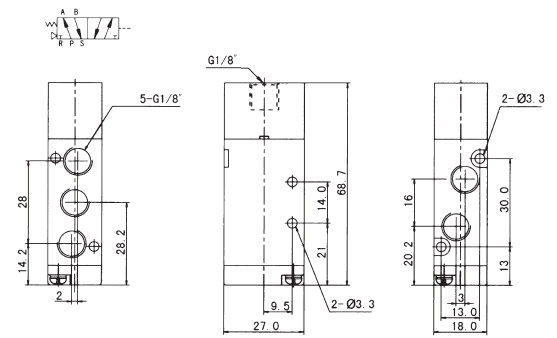
2

气动控制阀

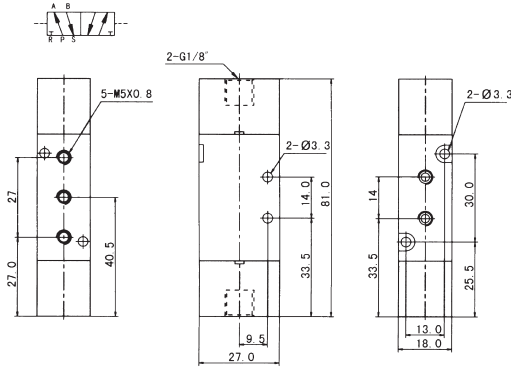
4A110-M5



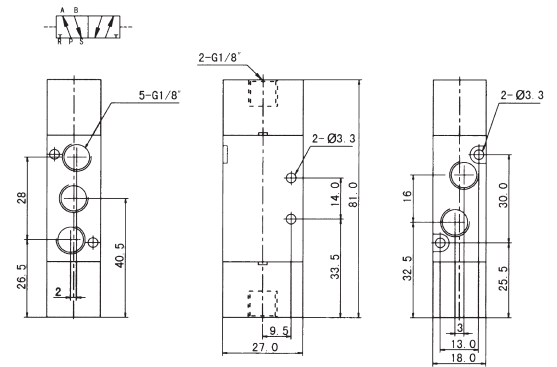
4A110-06



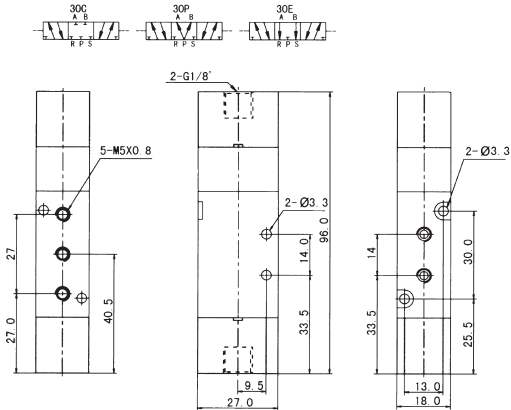
4A120-M5



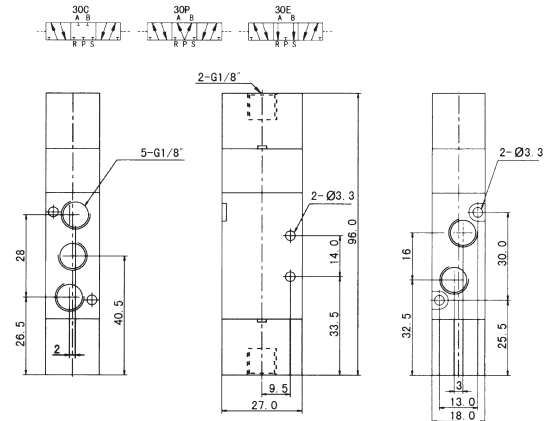
4A120-06



4A130-M5

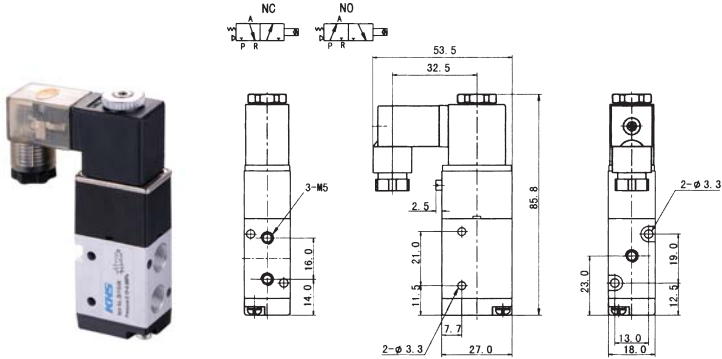


4A130-06

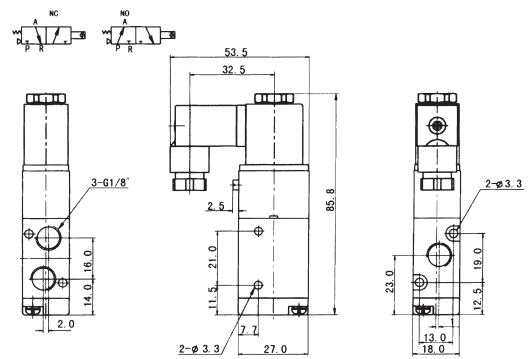


外形尺寸 / Dimension(mm):

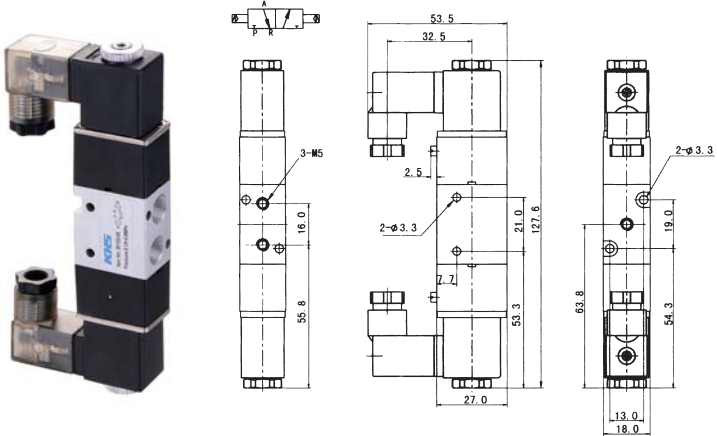
3V110-M5



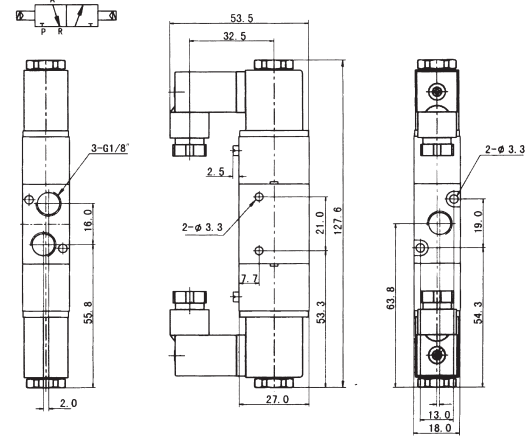
3V110-06



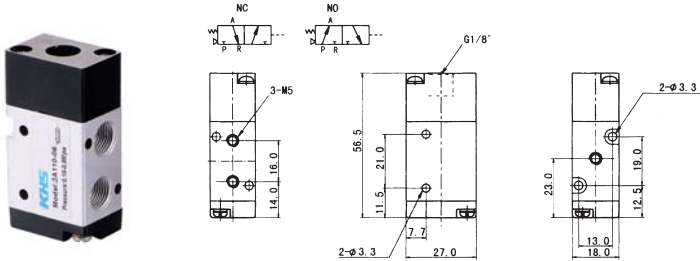
3V120-M5



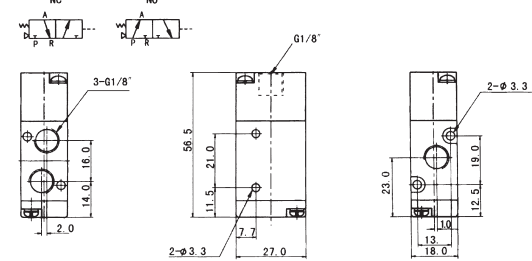
3V120-06



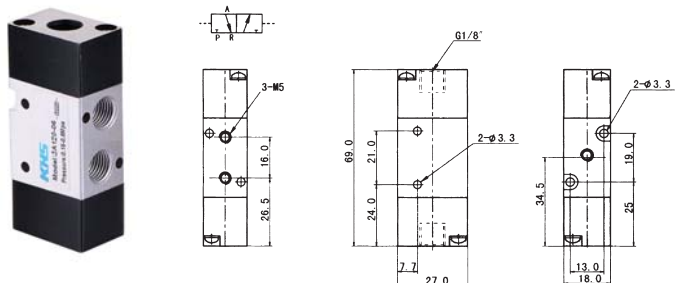
3A110-M5



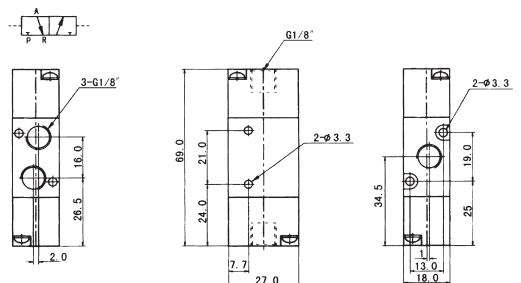
3A110-06



3A120-M5



3A120-06



气动控制阀