

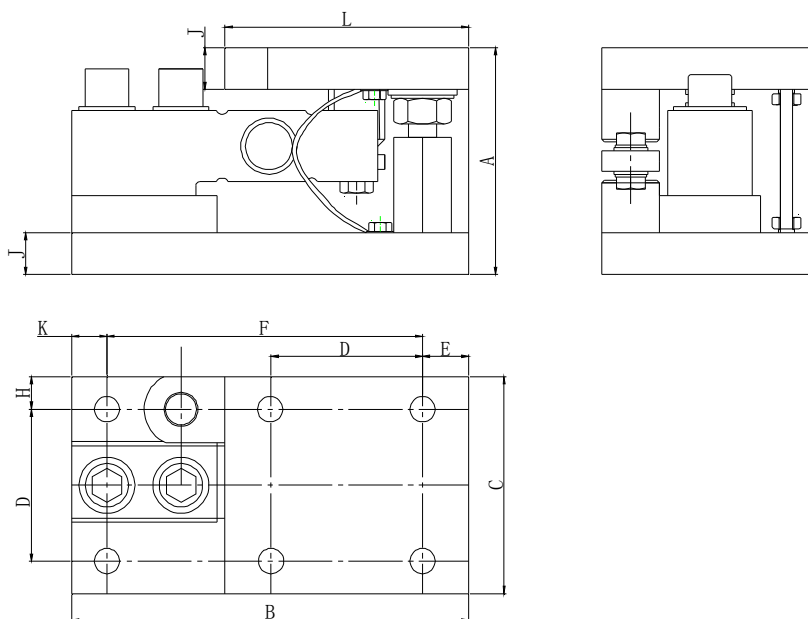
## LP7210 称重模块

### LP7210 Weighing Modules

额定载荷 Rated Capacity	0.25/0.5/1/2/2.5/3/5/7.5t
精度等级 Accuracy Class	C3
结构材质 Construction	横向带拉杆限位，竖向带防倾覆限位 With transverse stay rod and lift-off device 材质为碳钢或不锈钢 Carbon Steel or Stainless steel



#### 安装尺寸 Outline Dimension(mm)



Dimension Capacity	A	B	C	D	E	F	ΦG	H	J	K	L
0.25~2.5t	93.6±1.6	170	100	70	17	136	13.5	15	19	17	104
3~7.5t	125.3±2	220	120	84	25.5	175	14	18	23	19.5	135

#### 安装示意图 Mounting example of weighing modules with stay rods:

